

# **Social Protection and Labor (SP&L) Delivery Systems**

## **Definitions, objectives, elements, & trends**

**MARCH 23, 2015**

Diego F. Angel-Urdinola



**WORLD BANK GROUP**

# Content

---

- I. What do we mean by SP&L systems?
- II. Why are SP&L systems necessary?
- III. Developing SP&L systems

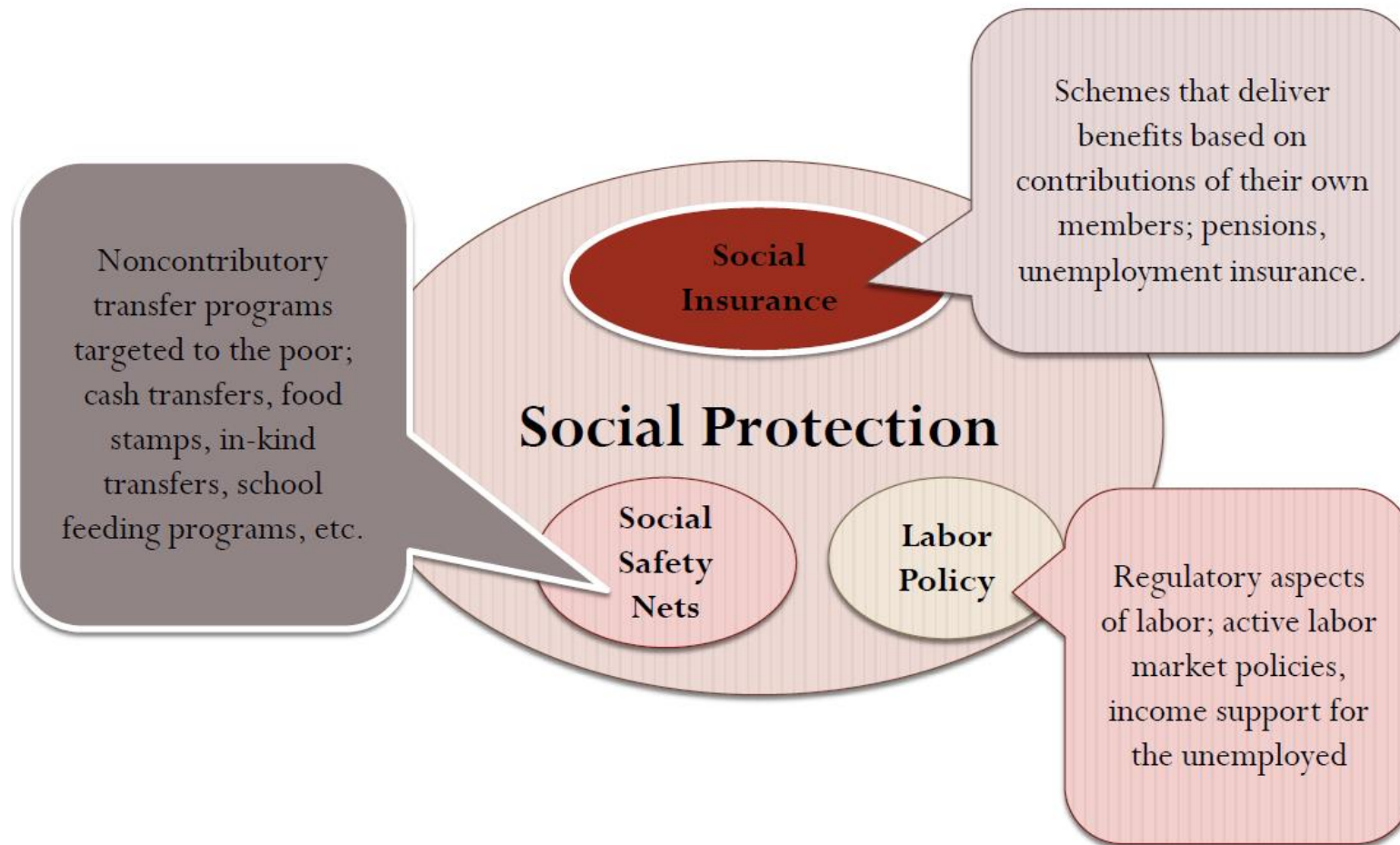
# What is a system?

---

- An entity with ***different parts working together*** to generate outcome / or functions
- Where the *whole* is bigger than sum of individual parts
- Something that exists long enough / is sustained over time / can *adapt* to changing environment



# What do we mean by SP&L?



# What do we mean by a SP&L system?

---



# Content

---

- I. What do we mean by SP&L systems?
- II. Why are SP&L systems necessary?
- III. Developing SP&L systems

# What are SP&L systems necessary?

---

912 m.

People in  
poverty  
below \$2/day  
(2010)

75 m.

Unem-  
ployed  
youth (2011)

Social protection  
and labor programs  
**are necessary** in a  
risky, changing  
world

674

Average  
number of  
disasters  
2006-10

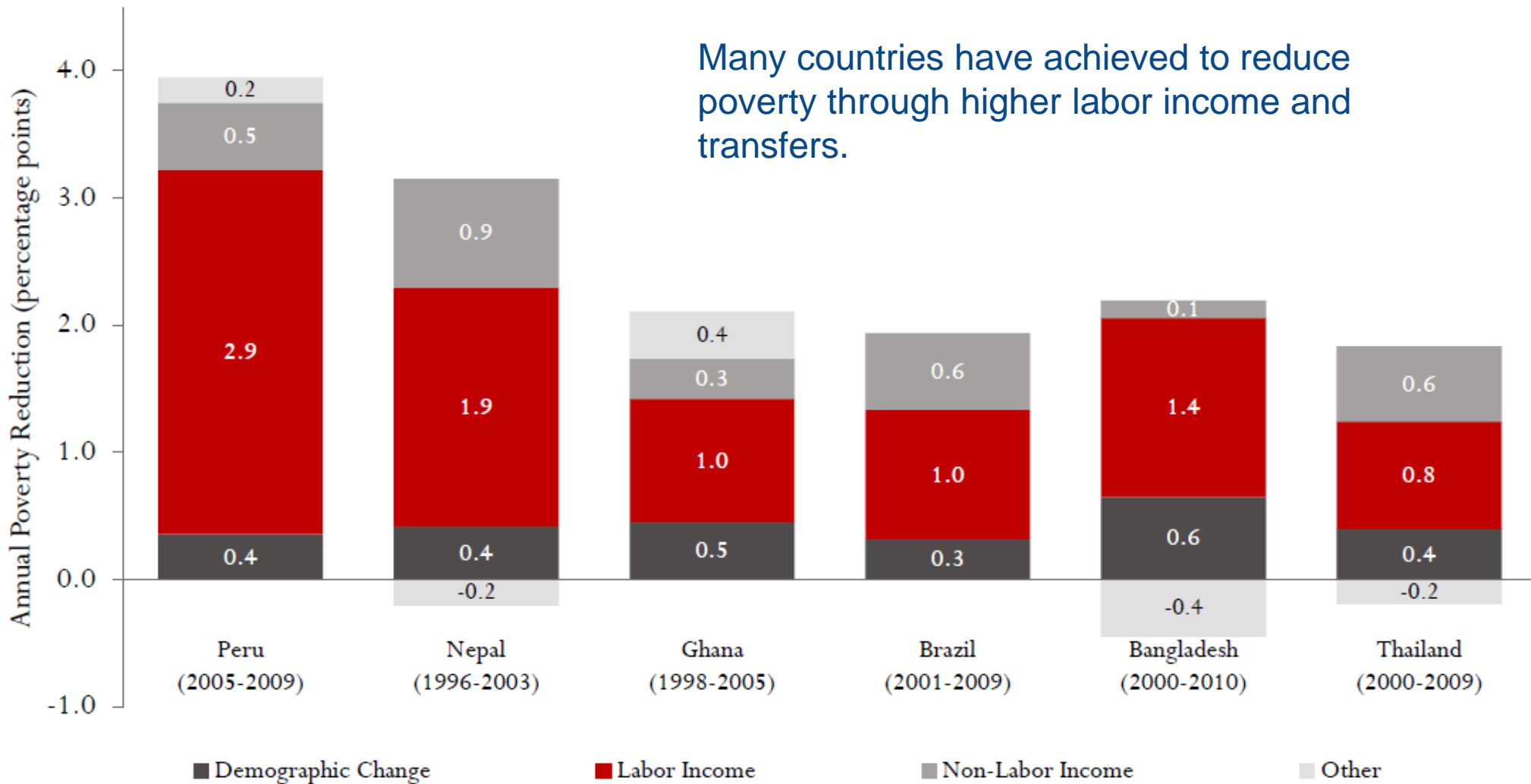
2 x

Number of  
**elderly**  
(over 60)  
in 2050  
compared to  
2010



# What are SP&L systems necessary?

Many countries have achieved to reduce poverty through higher labor income and transfers.



Source: Inchauste and others (2012)



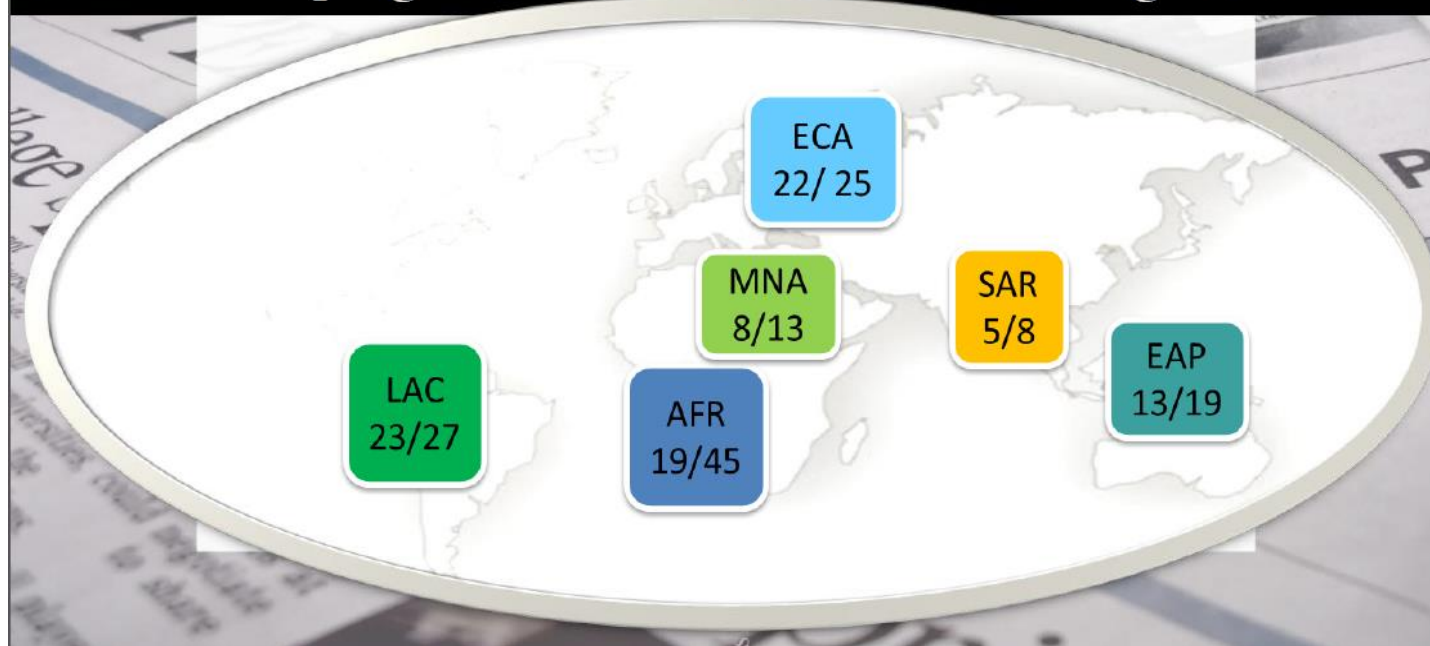
# What are SP&L systems necessary?

Headline 2008

Food & Fuel Price Increases, Financial Crisis Hits

Headline 2008/9

2/3s developing countries improve SSN during crisis

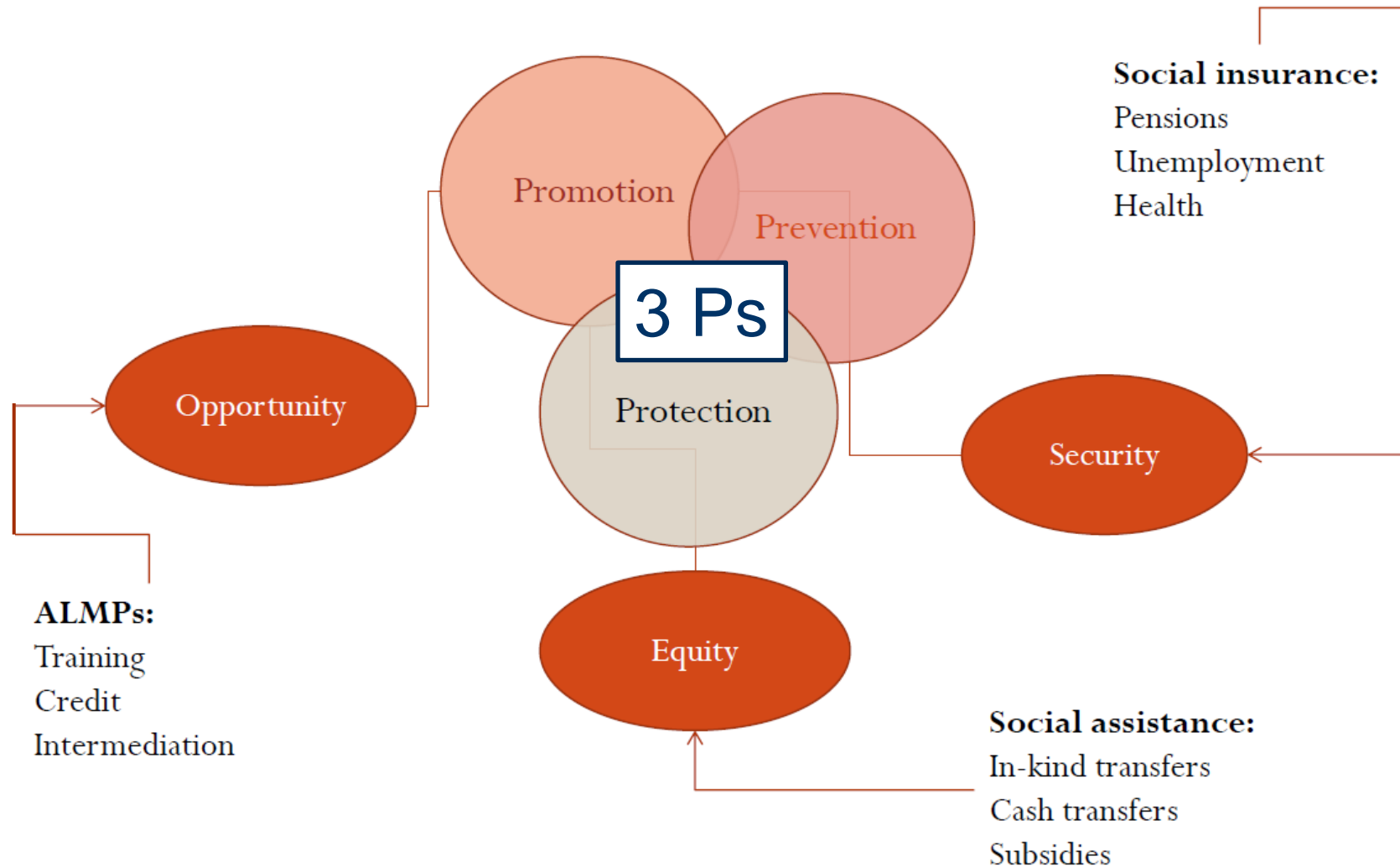


# Content

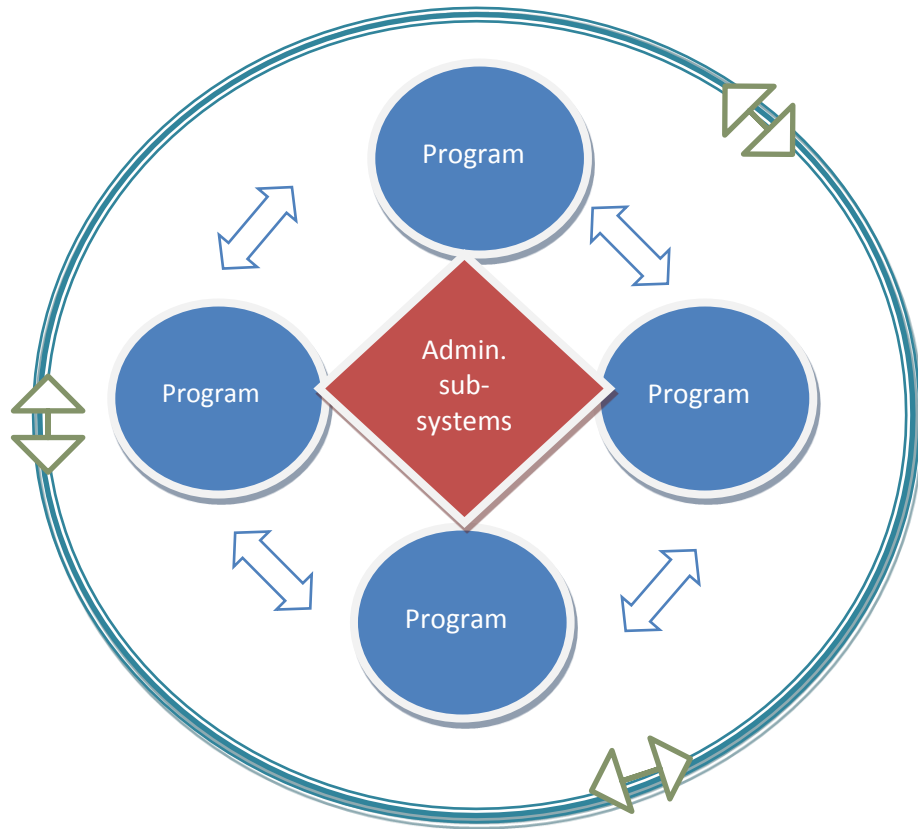
---

- I. What do we mean by SP&L systems?
- II. Why are SP&L systems necessary?
- III. **Developing SP&L systems**

# Basic Functions of SP&L systems

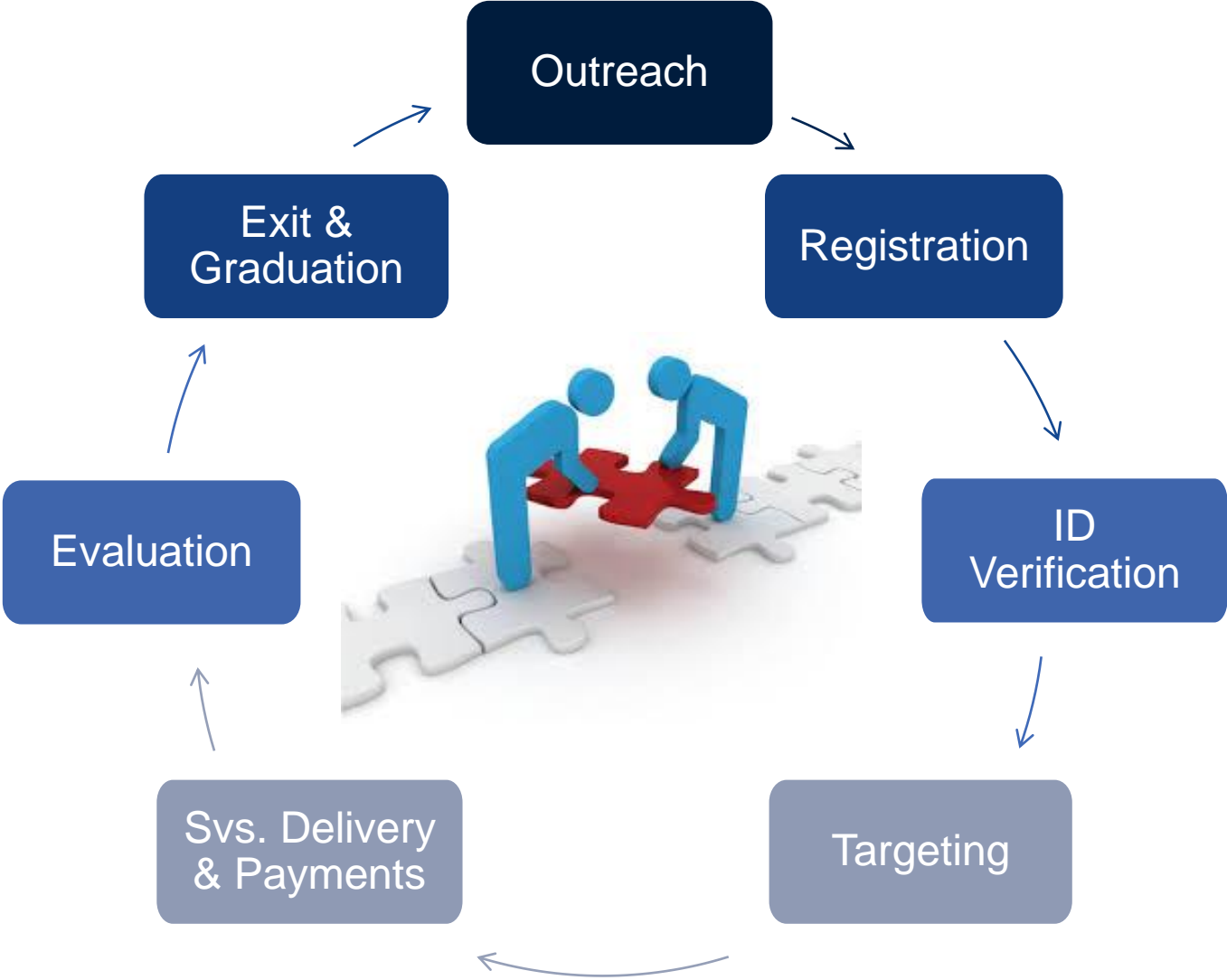


# Architecture of SP&L Systems



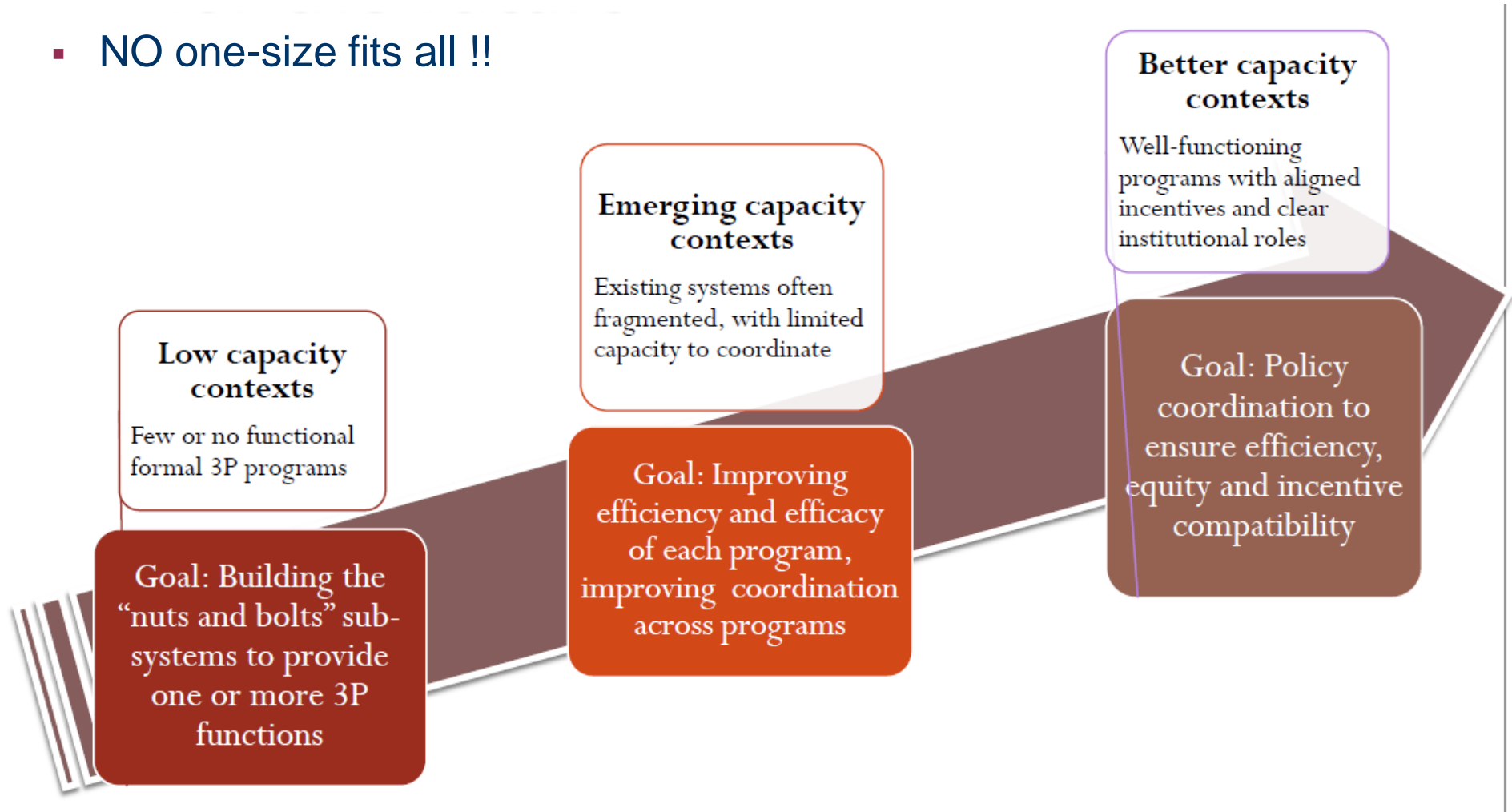
- Programs often share administrative sub-systems
- Communicate with each other
- Work together to deliver resilience, equity and opportunity

# Implementation of SP&L Systems

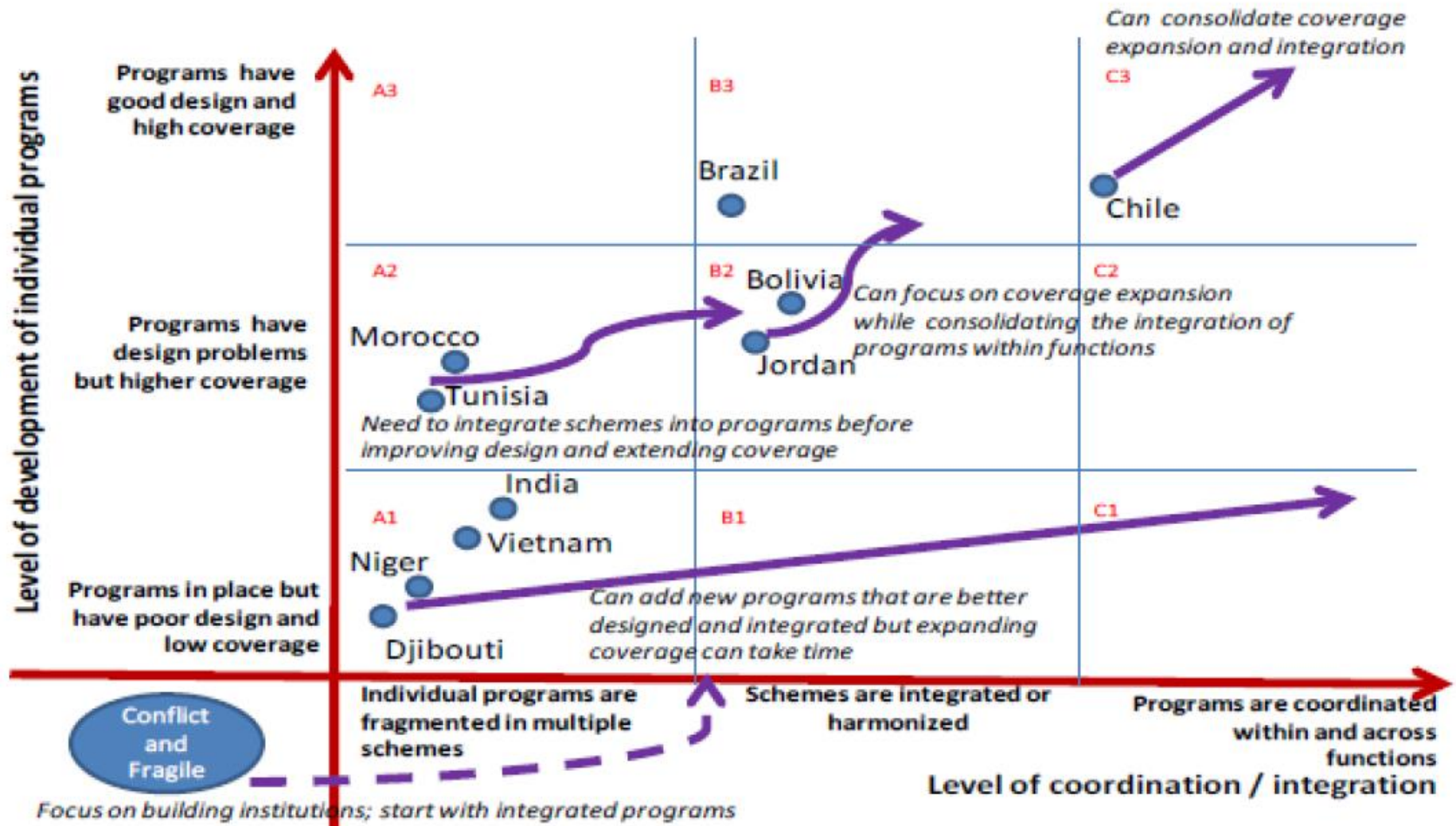


# Pathway to building SP&L Systems

- NO one-size fits all !!



# Pathway to building SP&L Systems



# Conclusions

---

- SP&L systems are entity of programs and institutions working together to **promote** human capital development, **prevent** against risks and shocks, and **protect** individuals (and their generations) from economic exclusion.
- SP&L systems can contribute to poverty reduction and are necessary in a risky, changing world.
- SP&L system in the developing world are nascent and face important challenges (low program coverage, large fragmentation, and modest effectiveness).
- Pathways to develop SP&L system differ based on specific country needs and level of development.
- Generally, it is recommendable to have good programs first and then to foster coordination and integration across programs and institutions.





**THANK YOU**

For more Information  
[www.worldbank.org/spstrategy](http://www.worldbank.org/spstrategy)  
[www.worldbank.org/rsr](http://www.worldbank.org/rsr)