

# COP Launch Workshop

Case study: Morocco

Affiliation: National Assistance (Entraide Nationale)

Presenter: Abdeljalil Cherkaoui

# Entraide Nationale (National Assistance-Morocco)

<b>Ministry in Charge</b>	<b>Solidarity, Family, Women and Social Development Ministry</b>
Founded (year)	1957
Number of Employees	4,600
Number of offices at the national level	Headquarters + 85 provincial offices and 10 regional coordinations
Annual budget (in dollars) / (% of GDP)	\$ 87.5 million
Number of beneficiaries	<b>279946</b>
Number of programs	Four major programs
Web page	<a href="http://www.entraide.ma">www.entraide.ma</a>

# National Assistance's Mission

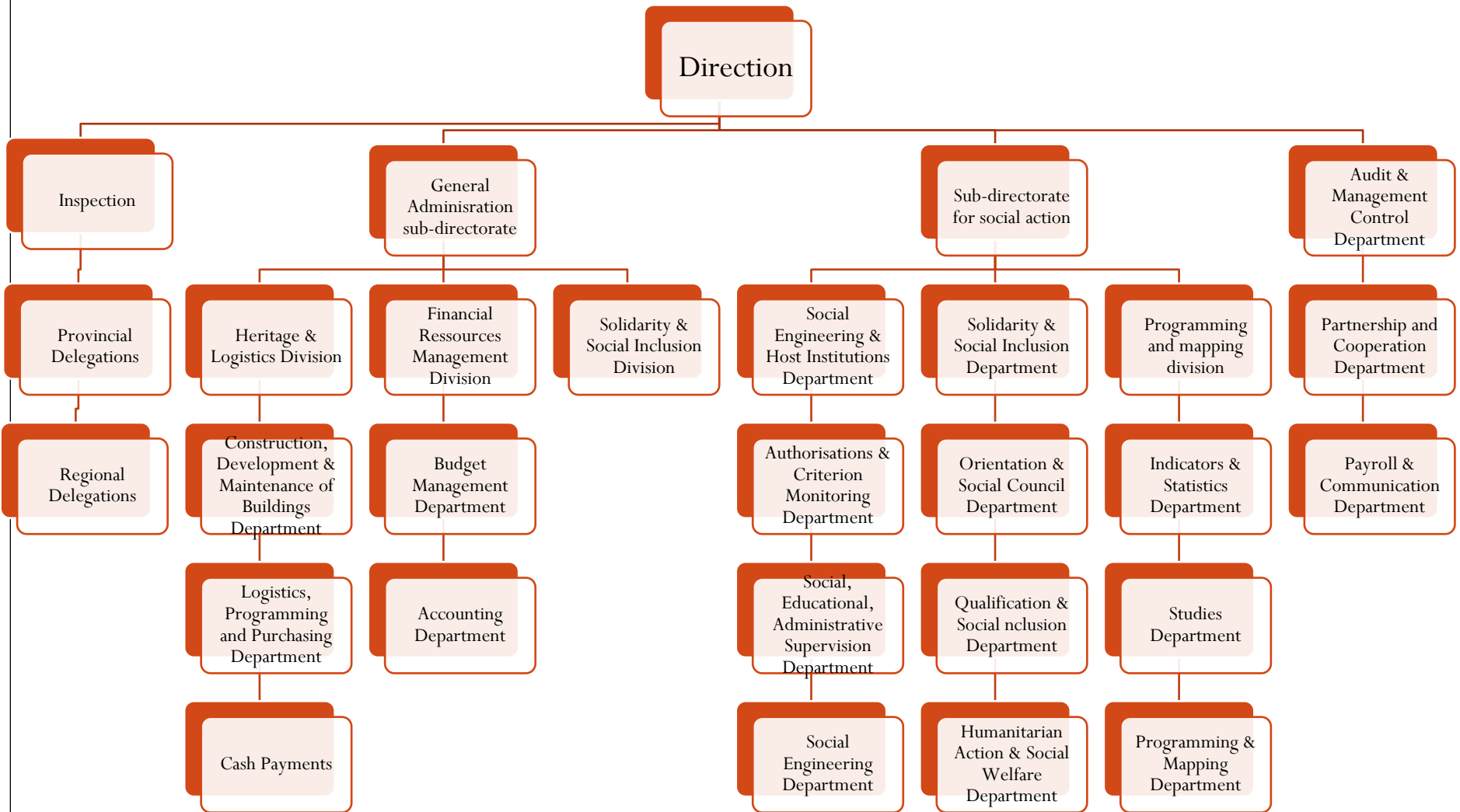
**Being a Moroccan public establishment and being a social stakeholder, the National Assistance is responsible for:**

- **Providing any form of a help and assistance**
- **Assisting in family and social promotion**

**Functions:**

- **Assistance and Charity Work Monitoring**
- **Consultation on the opportunity for the creation of any social and charitable work, as well as solidarity and assistance measures;**
- **Collection, storage, sharing and distribution of donations;**
- **Staff training on work it controls;**
- **Participation to the creation of institutions and establishments allowing access to work and social inclusion.**

# Organigramme de l'institution



## Main Programs Offered by the National Assistance

Name of program	Program Description	Number of Beneficiaries in 2012	Program budget	Beneficiaries selection method
<b>Program 1:</b> Welfare	This is a repair program for populations in situations of extreme hardship (in its three forms): permanent insecurity, temporary distress, temporary insecurity	<b>139116</b>		Targeting across a wide geographical coverage of the centers
<b>Program 2:</b> Social inclusion	It is a program based on economic empowerment, starting from: <ul style="list-style-type: none"> <li>• the support to education and schooling</li> <li>• Training / insertion</li> <li>• Social and solidarity economy</li> </ul>	All young people from social centers of EN: <b>115754</b>		Territorial targeting through partner organizations

## Main programs offered by the National Assistance

Name of program	Program Description	Number of beneficiaries in 2012	Program budget	Beneficiaries Selection Method
<b>Program 3</b> Social Animation	This program aims to: <ul style="list-style-type: none"> <li>• Mobilization of volunteers serving the persons in distress,</li> <li>• Regional Charity and public support for the under-privileged</li> <li>• The development of community activities in areas of high poverty</li> </ul>	<b>18064</b>		Implementation of DAM in popular neighborhoods: 66 + summer camps, educational, sports, advocacy, etc..
<b>Programme 4</b> Social engineering	This program consists of two main areas: <ul style="list-style-type: none"> <li>• the implementation of Law 14/05 accompaniment</li> <li>• Support of territorial social policy through an expertise that will put the light on areas to prioritize.</li> </ul>	The entire population of the cities and Taounat Figuig-Bouarfa		Territorial diagnosis

# Les principaux programmes offerts par L'Entraide nationale

	Program 1	Programme 2	Program 3	Program 4
Does the program have an operational manual? If yes,	Law 14/05	social engineering handbook	social engineering handbook	No
Is the operational manual is available to the public?	yes	Internal use	Internal use	No
In what language is the operational manual available?	Arabic / French	Arabic	Arabic	