

MENA CoP Launching Workshop

Republic of Yemen

Social Welfare Fund

Mansour Hussein Al Faidhi

Director, SWF

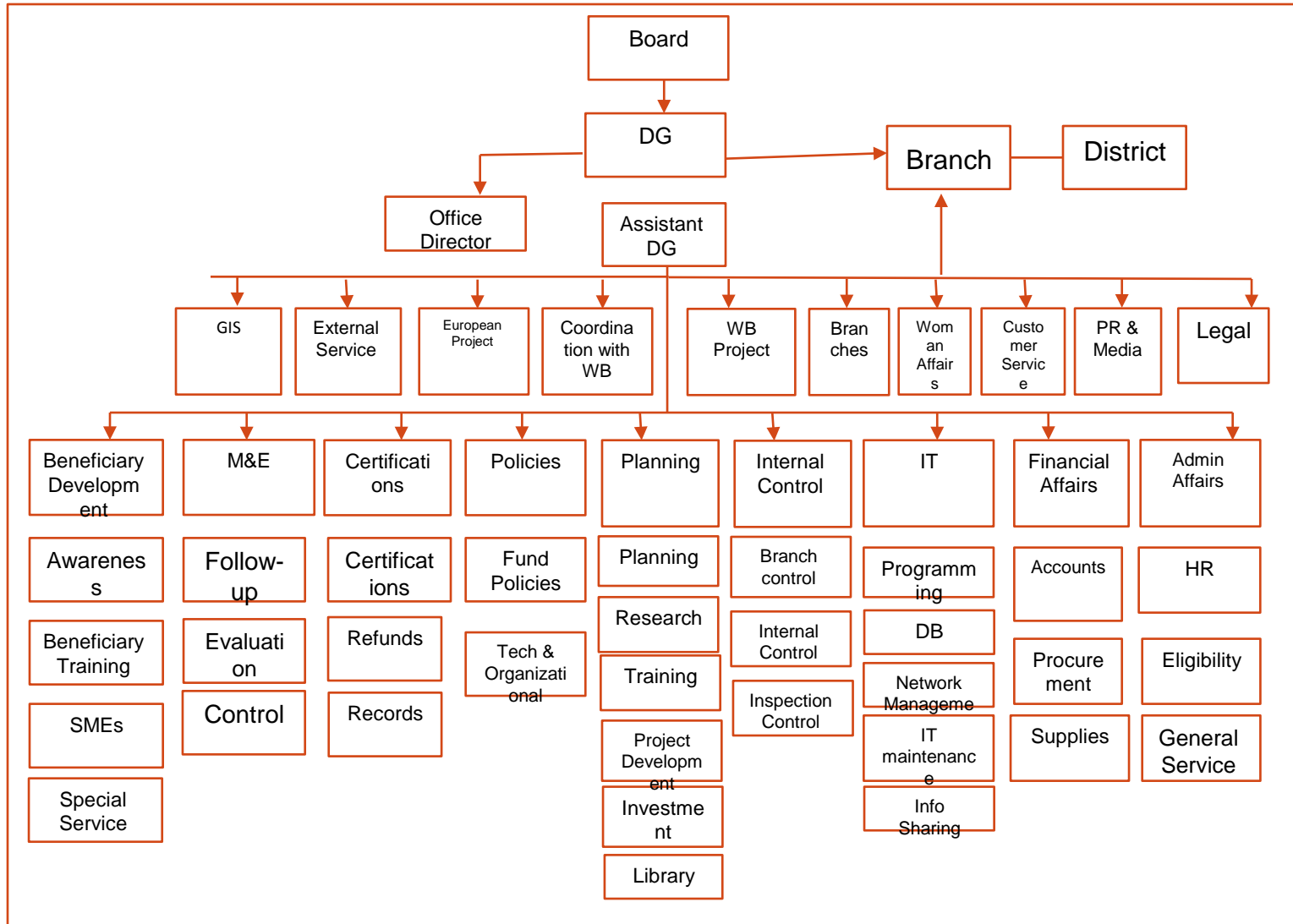
SWF (Yemen)

| | Responsibility |
|--|---|
| 1996 | Year of foundation |
| 1841 | No. of staff |
| 22 branches and 171 directorate offices | No. of offices at national level |
| \$292.006.740, representing around 3% of state budget | Annual budget (USD) as % of GDP |
| 1.551.735 | No. of beneficiaries |
| 4 main programs and some supplementing programs | No. of programs |
| www.swf.gov.ye | Webpage |

SWF: Mission

- **Help provide cash and in-kind assistance to the needy individuals and families to improve their living and social conditions, and combat negative behavior such as dependency on state assistance, mendicancy, etc.**

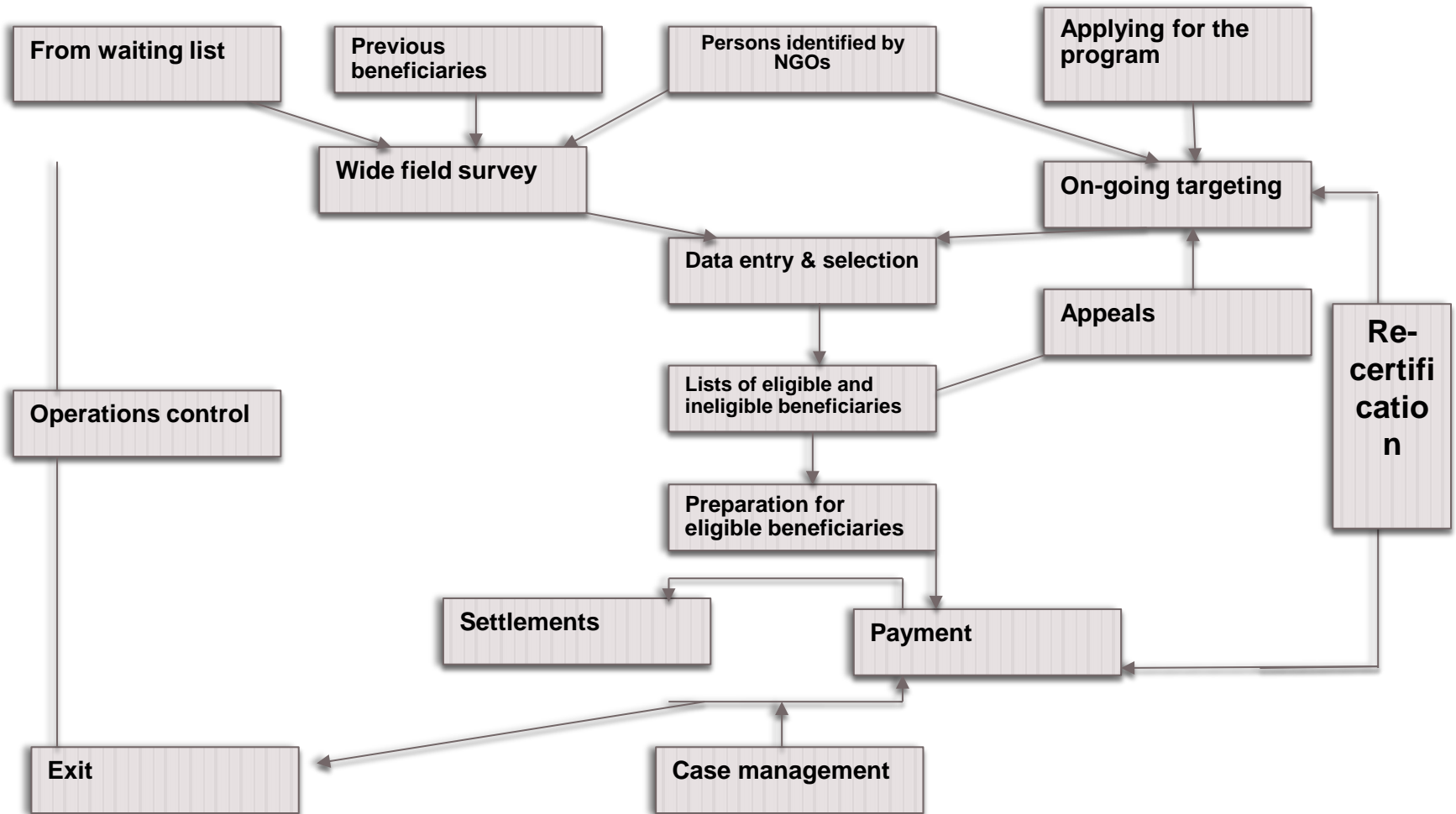
SWF: Organizational structure



Main programs/services provided (1)

| Beneficiary selection method | Program budget | # of beneficiaries in 2012 | Program description | Program name |
|---|------------------------------|----------------------------|---|---------------------------------------|
| <p>Beneficiary HHs are selected depending on available financial resources. The beneficiaries are registered after filling in the application. The beneficiary receives a booklet and ID card, and they are informed about their rights and duties.</p> <p>Selection is made using the PMT with support of the WB. This system has been developed based on the standard applications to measure poverty systematically and reduce arbitrary selections. Therefore, beneficiaries are selected based upon PMT.</p> | <p>62.502.282.400</p> | <p>1.551.735</p> | <p>Provide cash assistance to the poor according to the following groups:</p> <p>Economic:</p> <ol style="list-style-type: none"> 1. Women with no supporter 2. The unemployed <p>Social:</p> <ol style="list-style-type: none"> 1. Permanent full disability 2. Permanent partial disability 3. Temporary full/partial disability 4. Orphans 5. Old-age | <p>Cash Assistance Program</p> |

Program cycle



Main programs/services provided (2)

| Beneficiary selection method | Program budget | # of beneficiaries in 2012 | Program description | Program name |
|---|-------------------|--|--|-----------------------|
| <p>Beneficiaries of the economic group are selected according to the following criteria:</p> <ol style="list-style-type: none"> 1. Food poverty 2. Beneficiary age (for training courses): 18-55 years old 3. Beneficiary educational level: It should be in line with the training requirements 4. Beneficiary health status: It should be in line with the training requirements 5. The beneficiary should have some knowledge on the subject matter 6. Trainings facilitates finding jobs by the beneficiaries | <p>50.000.000</p> | <p>Program operations were on hold in 2012 due to political situation. However, it has targeted so far over 31655 HHs.</p> | <p>Develop beneficiary capacity to enhance their human capital through learning skills to facilitate their entrance of LM and move to productivity</p> | <p>Skill training</p> |

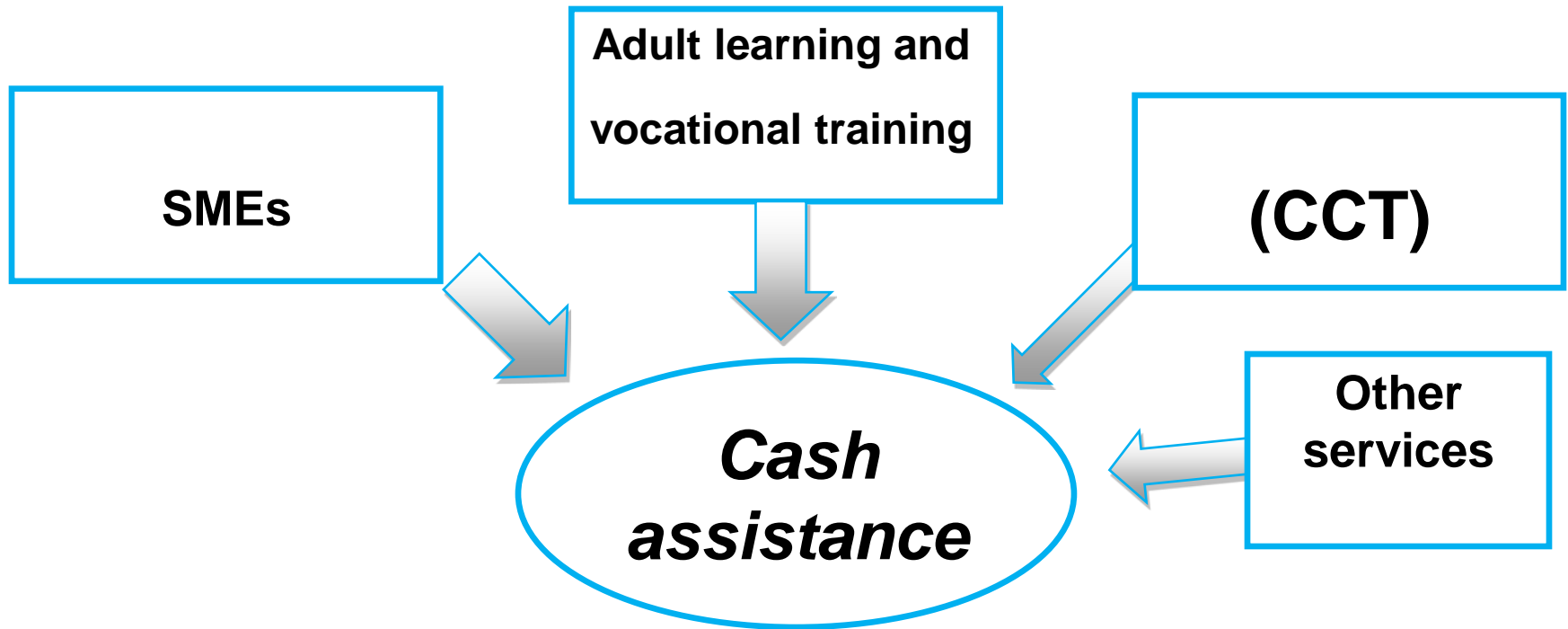
Main programs/services provided (3)

| Beneficiary selection method | Program budget | # of beneficiaries in 2012 | Program description | Program name |
|---|----------------------|---|---|--------------|
| <p>There are two types of HHs targeted by this program:</p> <ul style="list-style-type: none"> ❖ Beneficiaries who successfully finished the skills training (animal raising, bee raising, sewing, and marketing) ❖ Beneficiaries with specific knowledge will be tested to measure their competency. They are selected based on the following criteria: <ol style="list-style-type: none"> 1. Falling within the economic category 2. Beneficiary age between 18-55 years old 3. Health status is appropriate for work | <p>1.400.000.000</p> | <p>Program operations were on hold in 2012 due to political situation. However, it has targeted so far over 8946 HHs and over 50,000 individuals.</p> | <p>SWF provides micro loans and training. This program helps prepare the beneficiaries to run their own business.</p> | <p>SMEs</p> |

Main programs/services provided (4)

| Beneficiary selection method | Program budget | # of beneficiaries in 2012 | Program description | Program name |
|--|--------------------|--|---|--|
| <p>Beneficiaries are selected as follows:</p> <ol style="list-style-type: none"> 1. Children between 6-15 years enrolled in primary education 2. Children between 16-18 years enrolled in secondary education 3. In case there are two school-age children, preferably girls, incentives are provided <p>Education incentives are provided in case the child regularly attends school, and such attendance is regularly monitored. Level of incentives differ by age, with secondary education the highest.</p> | <p>249.750.000</p> | <p>During Phase I, the program targeted 7570 children, compared with 38013 children in Phase II.</p> | <p>CCT program linked to child enrollment in primary and secondary school. It aims to increase enrollment rates of SWF beneficiary HHs through providing education incentives</p> | <p>EC-funded conditional cash transfers CCT Project Funded by the EU</p> |

SWF program structure



Procedure manuals for service delivery

| CCT | SMEs | Skills training | Cash assistance | Issues |
|---|---|---|---|--|
| There is a procedure manual with details on service delivery | There is a procedure manual with details on service delivery | There is a procedure manual with details on service delivery | There is a procedure manual with details on service delivery | Have a procedure manual for the program |
| SWF communicates with the public only through a billboard used in SWF offices to introduce the services available | SWF communicates with the public only through a billboard used in SWF offices to introduce the services available | SWF communicates with the public only through a billboard used in SWF offices to introduce the services available | SWF communicates with the public only through a billboard used in SWF offices to introduce the services available | Have the procedure manual for the program for public |
| Arabic-English | Arabic-English | Arabic-English | Arabic-English | Manual languages |