



CENTER for MEDITERRANEAN
INTEGRATION | CENTRE pour
l'INTÉGRATION en MÉDITERRANÉE
مركز التكامل المتوسطي



CMI-FEMISE MED BRIEF WEBINAR SERIES

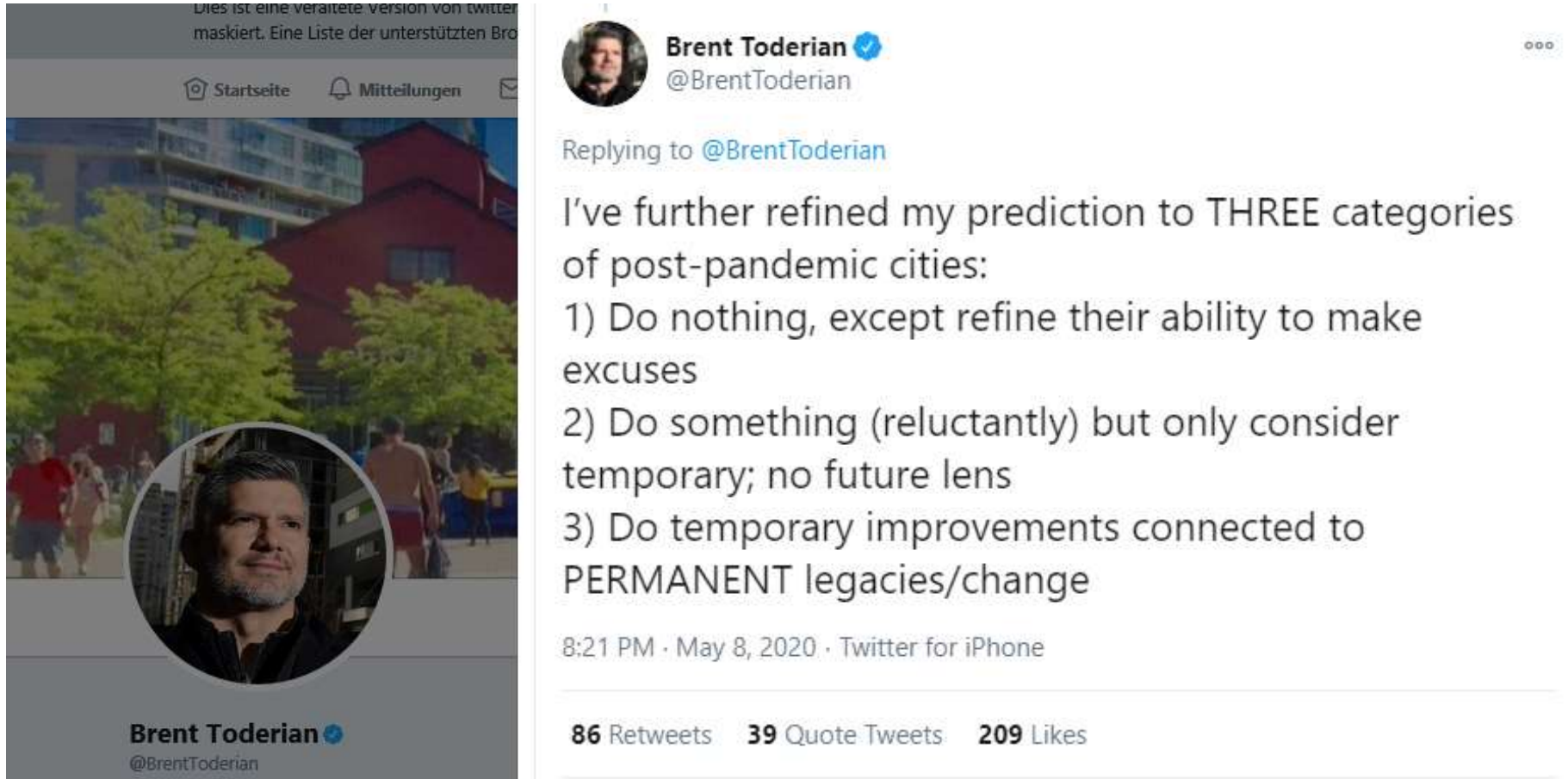
NAVIGATING THROUGH COVID-19 IN THE MEDITERRANEAN ACT 1: STRATEGIES FOR INTEGRATION AND RESILIENCE

Towards Responsive Transportation- Oriented Policies

BY BESTE ŞENSÖZ, LINUS PLATZER AND ARMIN WAGNER


TUMI, TU BERLIN, GIZ

Recently on Twitter...



Dies ist eine verarbeitete Version von twitter maskiert. Eine Liste der unterstützten Bro

Startseite Mitteilungen

 **Brent Toderian** ✓
@BrentToderian

Replying to @BrentToderian

I've further refined my prediction to **THREE** categories of post-pandemic cities:

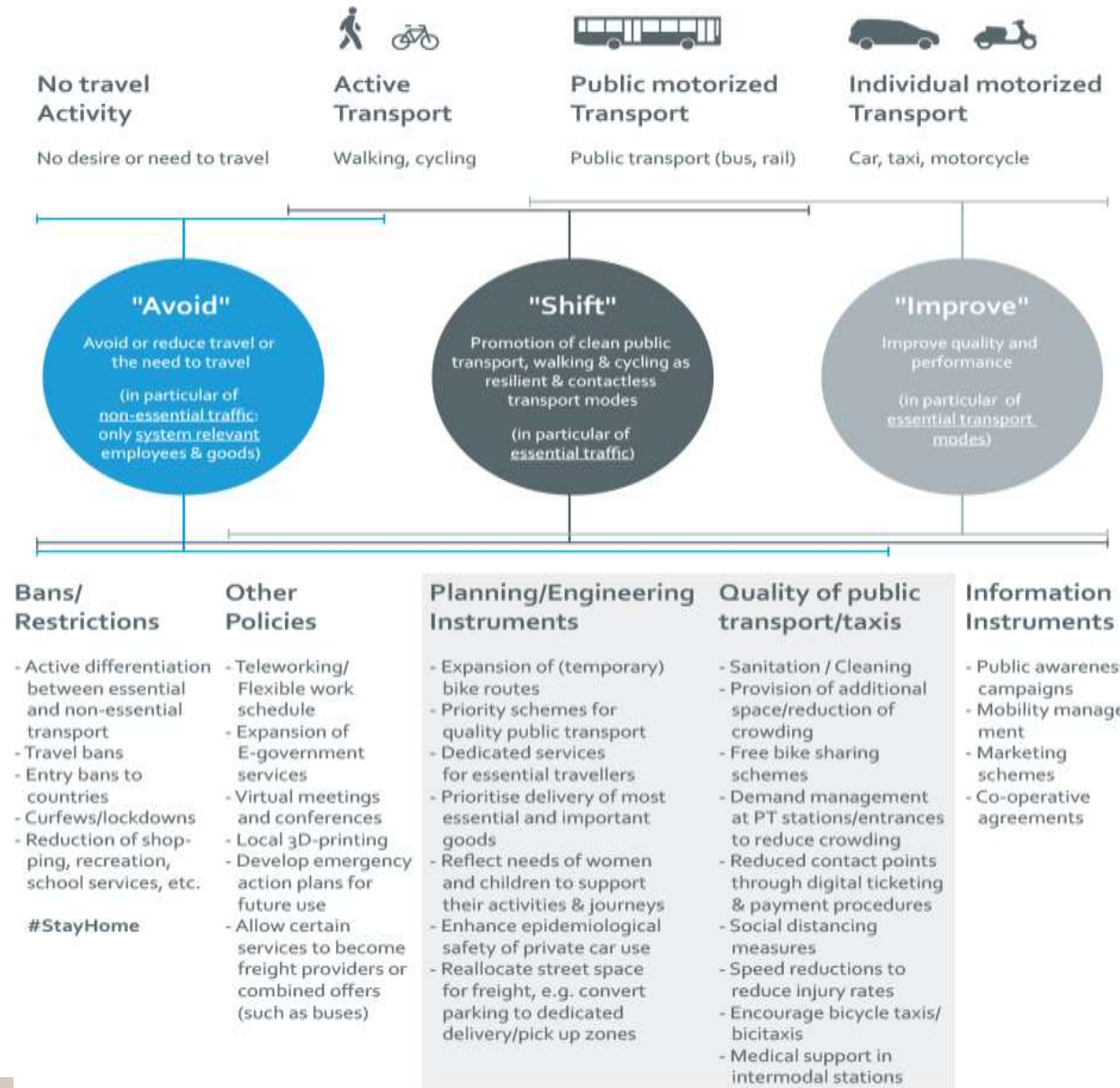
- 1) Do nothing, except refine their ability to make excuses
- 2) Do something (reluctantly) but only consider temporary; no future lens
- 3) Do temporary improvements connected to **PERMANENT** legacies/change

8:21 PM · May 8, 2020 · Twitter for iPhone

86 Retweets **39** Quote Tweets **209** Likes

<https://twitter.com/BrentToderian/status/1258824268034437120>

Avoid Shift Improve – Instruments @ COVID-19*



*all measures to be aligned with general health recommendations and rules of conduct as of 20/03/2020

Illustration based on: Ballmann and Bräutigam (2021), Sustainable transport: A sourcebook for policy-makers in developing cities, *Metrolife*, transport and climate change, <http://bit.ly/3c0nd>.
 Ball, E., Mathis, N., Wagner, A. (2020). The COVID-19 outbreak and implications to public transport – some observations. TUM website. <https://www.transformative-mobility.org/news/the-covid-19-outbreak-and-implications-to-public-transport-some-observations> (accessed: 18.03.2020)

Key trends:

- Pop-up infrastructure
- Bus priority schemes
- Open streets
- Contactless ticketing
- New work policies
- Digitalization
- ...

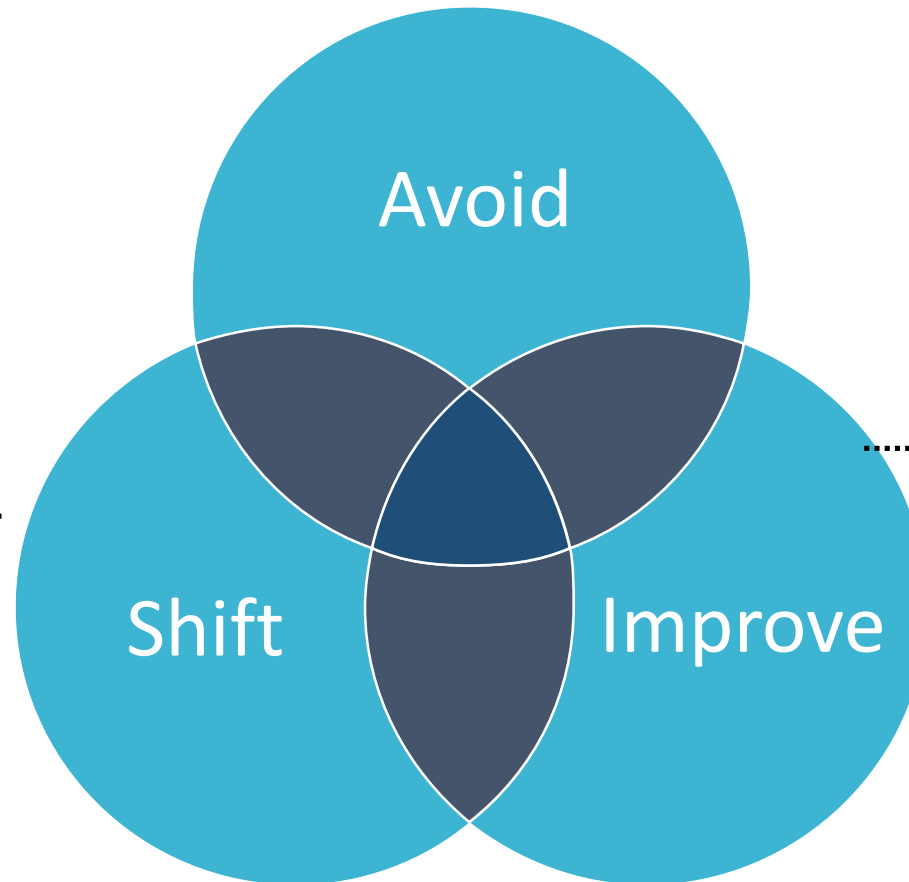


Reduction of (motorised) transport demand (Avoid)

- Promotion of compact resource and space-saving, human-centred accessible, barrier-free, mixed-use oriented cities
- Promotion of remote working and learning

Promotion of public transport and active mobility (Shift)

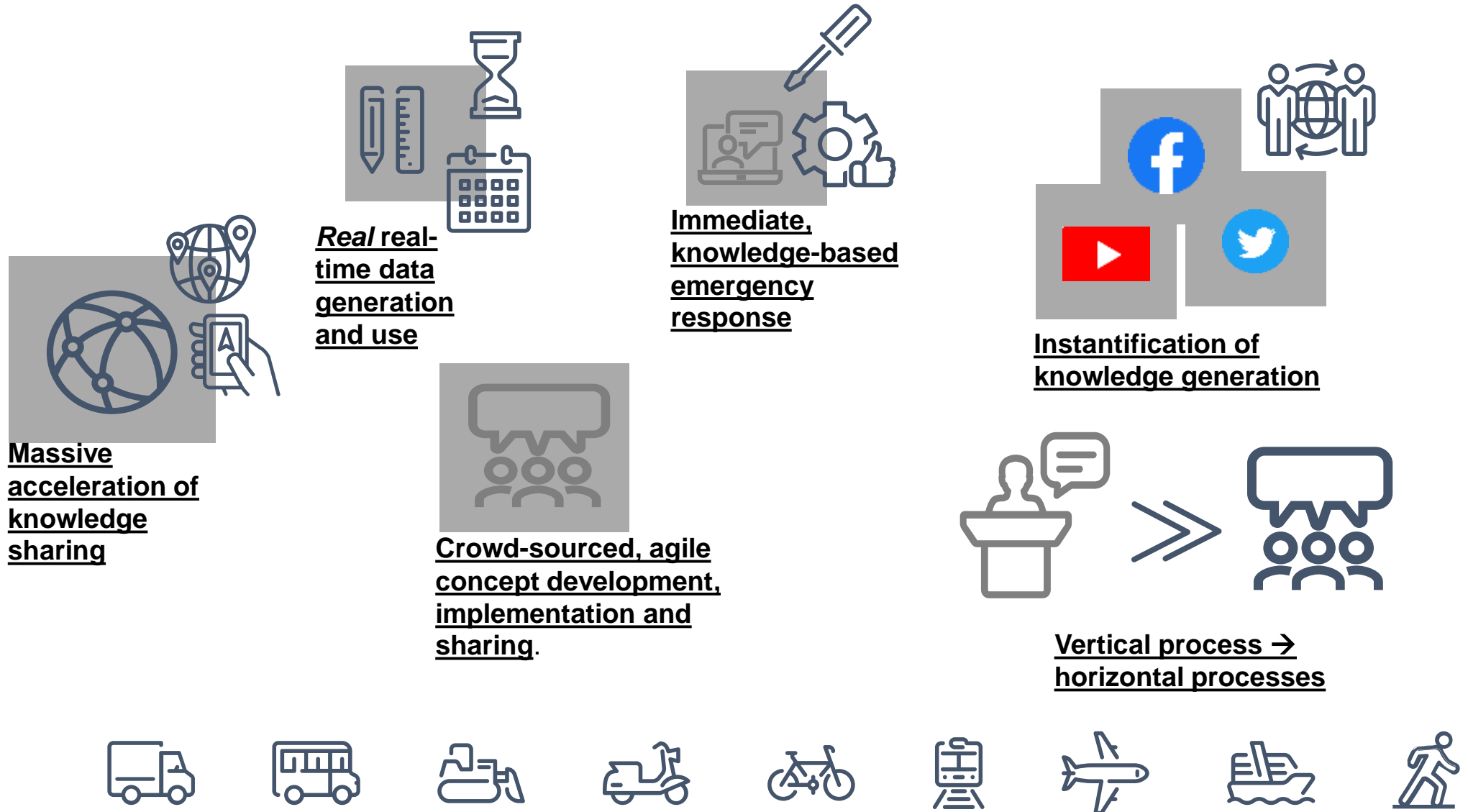
- Promotion of safe, reliable, affordable, accessible and high-quality public transport, cycling and walking
- Restore confidence in public transport



- Mobility bonuses for sustainable mobility solutions such as public transport, (e-)bicycles, cargo bikes, company bicycles, e-bike charging stations among others
 - Linking the promotion and implementation of transport measures to increasing energy efficiency and mitigating CO2 emission

Improving the quality of transport (Improve)

New Work. New Communication.



More on
[www.transformative-
mobility.org](http://www.transformative-mobility.org)

Armin.Wagner@giz.de

<https://twitter.com/tuminitiative>

<https://twitter.com/urbanarmin>